

Display Solutions Your Future. On Display.



2F BJS Bldg., 1869 P. Domingo St., Makati City 1206

Info@techpryme.com

www.techpryme.com

Table of Contents

About the Company	1
Display Solutions	2
Professional Displays	3
Visual eXperience Transformation (VXT)	4
Other Services	6
Why Choose Us?	7

About the Company

At TechPryme, we're dedicated to understanding our clients' unique needs. By tailoring technology and business process outsourcing solutions, we exceed expectations and build lasting partnerships based on mutual success.

Our team of experts seamlessly integrates innovation with an in-depth comprehension of your business landscape, ensuring that our solutions are not just advanced but intricately customized to empower your business like never before.

Our Mission

Provide reliable solutions that are relevant, intuitive, and adaptable to all types of businesses.

Our Vision

To be Your Go-To technology enabled solutions partner.

Display Solutions



Gaming Monitor



Smart Monitor



Smart Signage



Video Wall



LED Wall



Hotel IPTV



Flip 2.0



Self-Ordering Kiosk

Professional Displays

Semi Outdoor



SEGMENT	SIZE	RESOLUTION	DESCRIPTION
OM46B	46"	FHD	4,000nit, 24/7, Haze 0%, VESA 400 x 400 mm, High brightness Semi-Outdoor / Slim & Clean back design / Built-in MagicInfo Player S7, SSSP 7.0
OM55B	55"	UHD	4,000nit, 24/7, Haze 0%, VESA 400 x 400 mm, High brightness Semi-Outdoor / Slim & Clean back design / Built-in MagicInfo Player S7, SSSP 7.0
OM55N	55"	UHD	4,000nit, 24/7, Haze 0%, 23.1kg, VESA 400 x 400 mm, High brightness Semi-Outdoor Slim & Clean back design Built-in MagicInfo Player S6, SSSP 6.0, IP 5X rated, Tizen 4.0

Full Outdoor



SEGMENT	SIZE	RESOLUTION	DESCRIPTION
OH24B	24"	FHD	1,500nit, 24/7, Haze 0%, VESA 400 x 400 mm, Power-box Integrated, IP66, IK-10, Built-in MagicInfo Player S10, SSSP 10.0, External WiFi/BT
OH46B	46"	FHD	3,500nit, 24/7, Haze 0%, VESA 400 x 400 mm, Power-box Integrated, IP66, IK-10, Built-in MagicInfo Player S10, SSSP 10.0, External WiFi/BT
OH55A-S	55"	FHD	3,500nit, 24/7, Haze 0%, VESA 400 x 400 mm, Power-box Integrated, IP66, IK-10, Built-in MagicInfo Player S10, SSSP 10.0, External WiFi/BT
OH75A	75"	UHD	3,500nit, 24/7, Haze 1%, VESA 400 x 400 mm, Power-box Integrated, IP66, IK-10, Built-in MagicInfo Player S10, SSSP 10.0, External WiFi/BT
OH85N-S	85"	UHD	3,000nit, 24/7, Haze 0%, VESA 400 x 400 mm, Slim High Brightness, IP56 Outdoor, Built-in MagicInfo Player S6, SSSP6

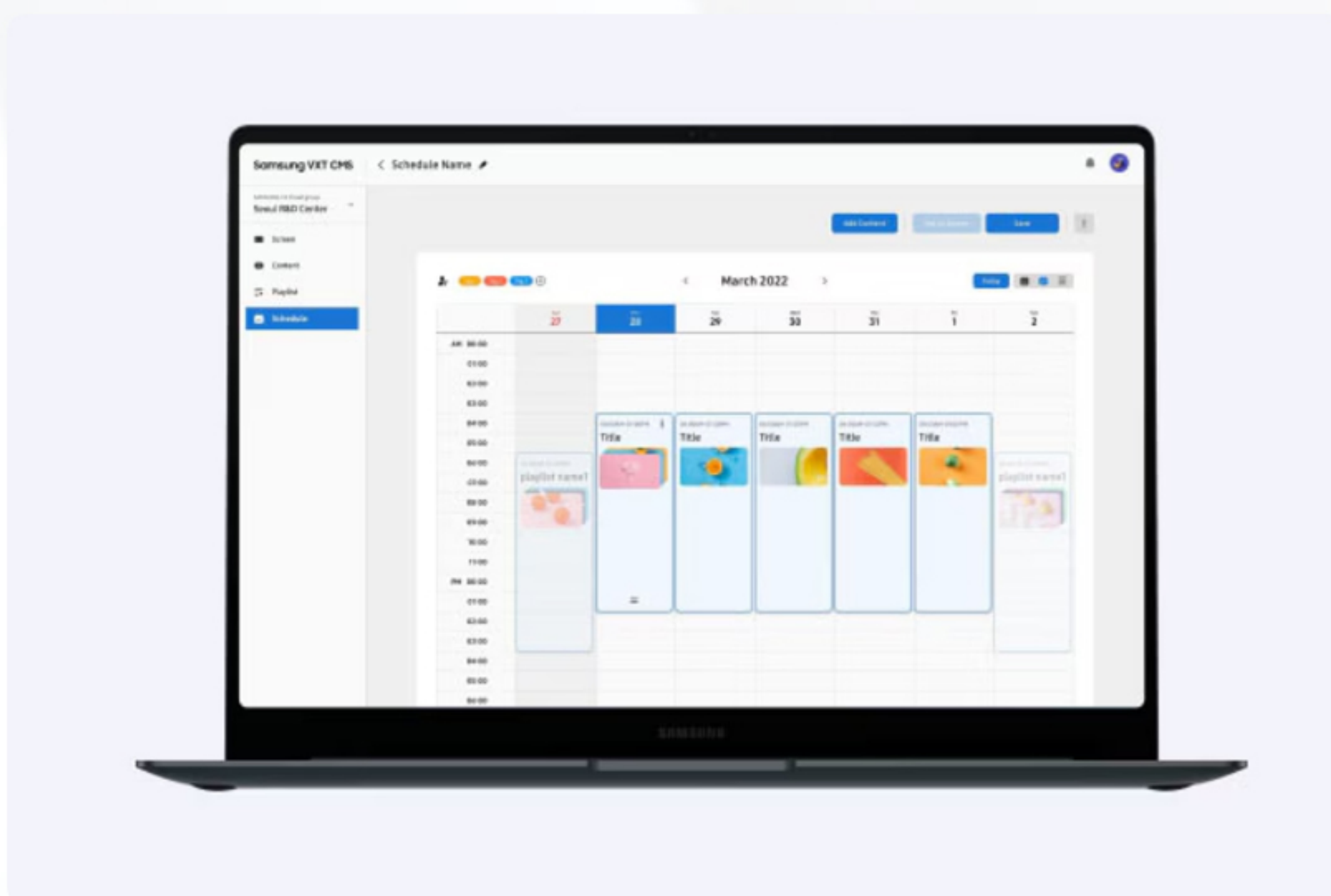
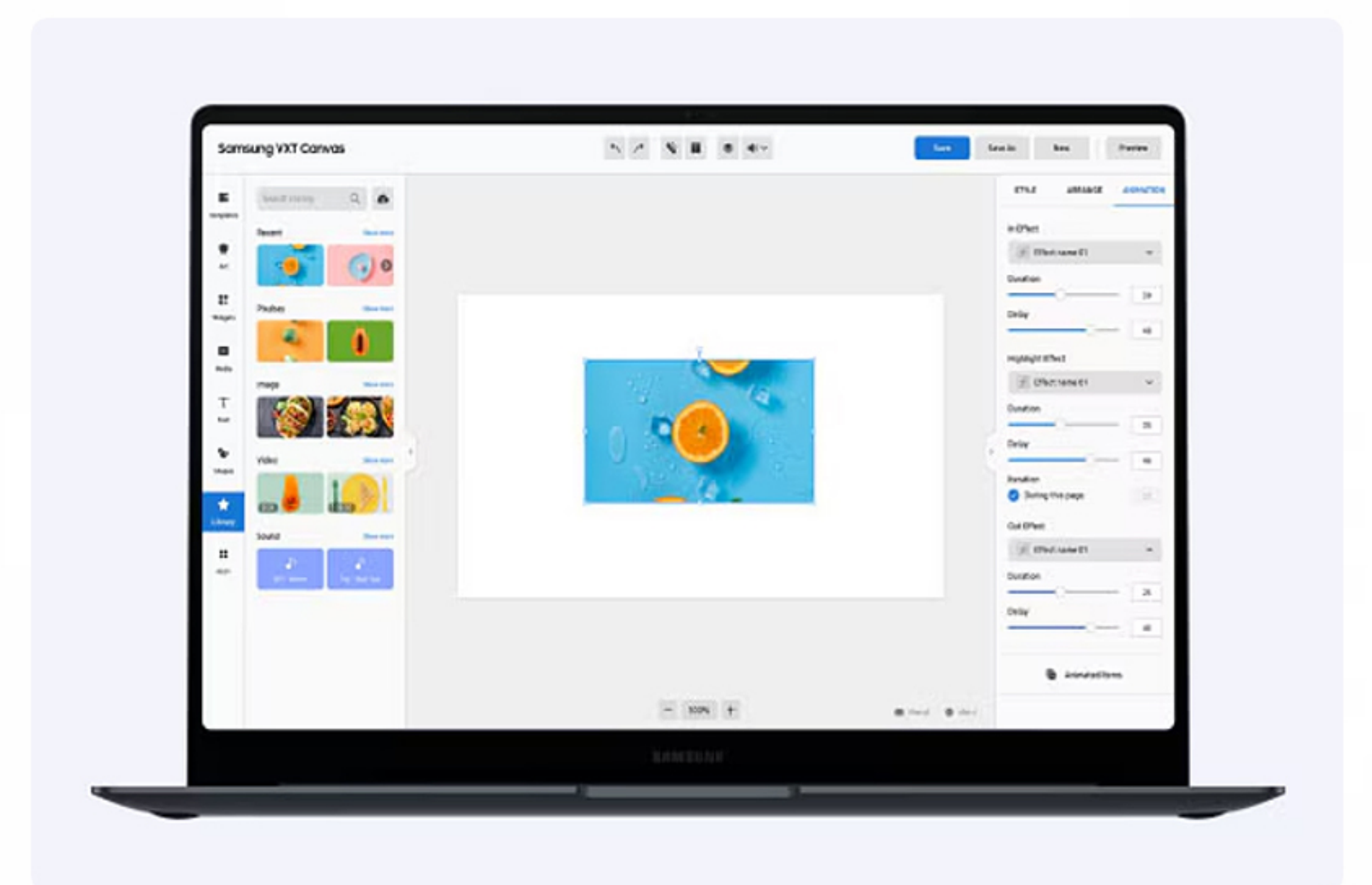
Visual eXperience Transformation

Samsung VXT is a cloud-based solution for digital signage, bringing intuitive content management and remote display management together in one secure platform.

Samsung VXT Content Management

Effortlessly create promotional content

VXT Canvas enables anyone to create content effortlessly and more intuitively. You can create original content with a variety of templates and free stock images, even adding widgets for more dynamic, visually engaging content. As the use of interactive content for digital displays continues to increase, VXT Canvas also allows for easy touch content creation.



Easy, intuitive scheduling and playlist creation

Samsung VXT uses an intuitive drag and drop interface, making content scheduling and playlist creation simple with just a few quick clicks. It also allows for adjusting content schedules and distributing them to connected displays anytime, without requiring a PC.

Keep content in sync

VXT offers a SyncPlay function, synchronizing all screens across the system and playing content in line with each other. Regardless of the server time connected to the display, VXT synchronizes the internal time across multiple displays and constantly checks it during content playback to prevent lag or streaming delay, while also eliminating gaps as content transitions.



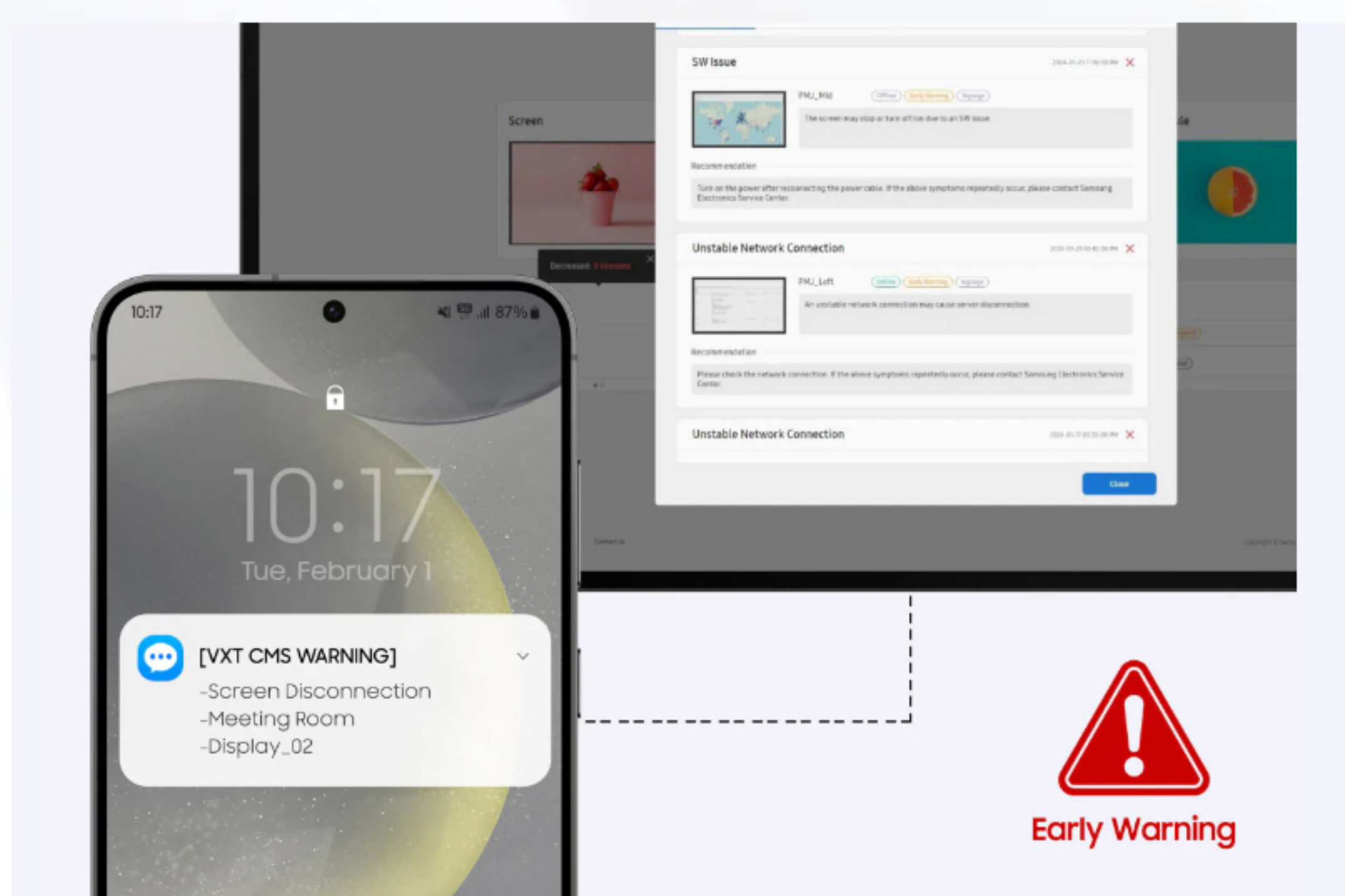
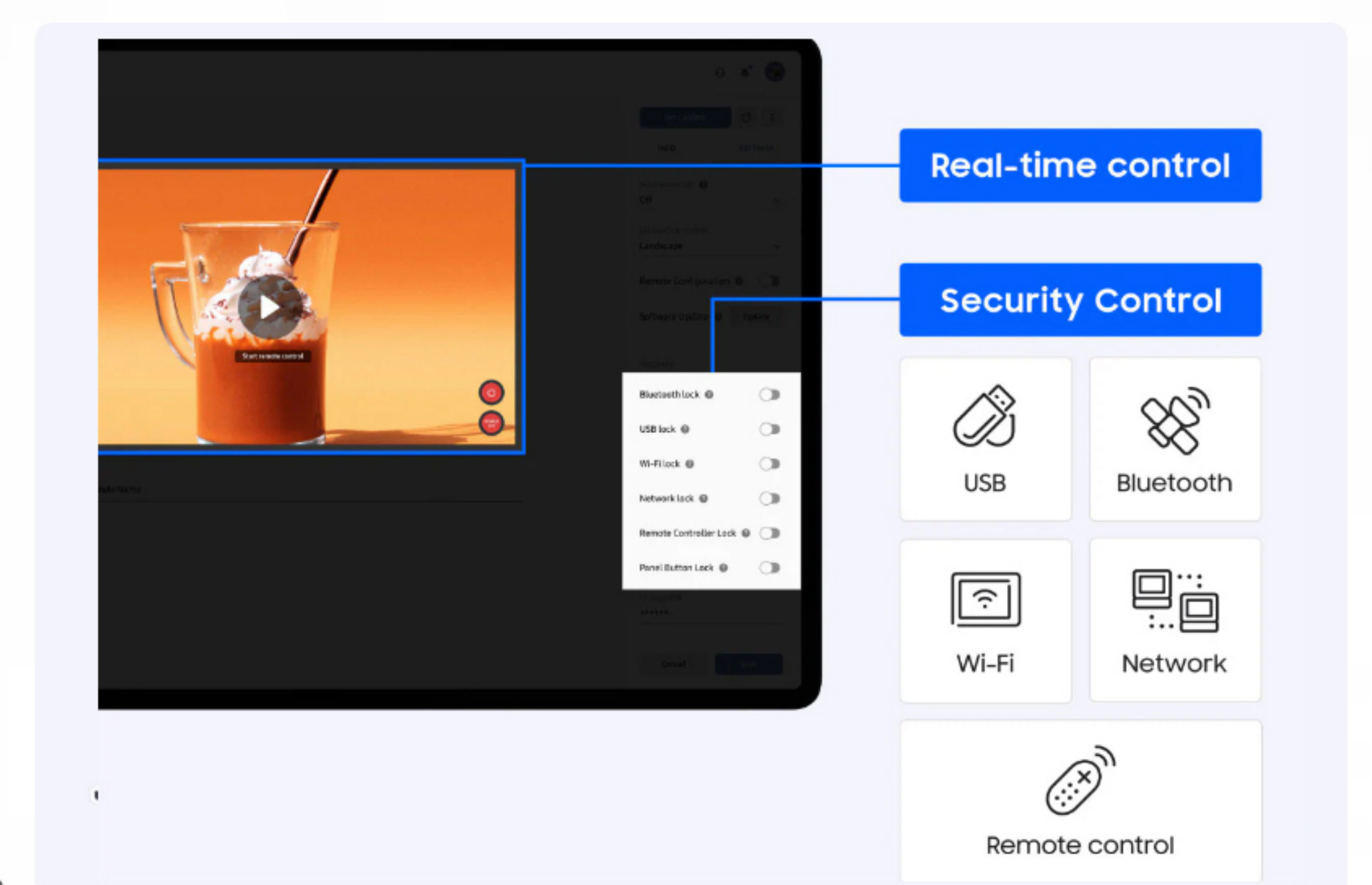
Visual eXperience Transformation

Samsung VXT Remote Management

Remote control

Samsung VXT provides an intuitive interface with remote real-time monitoring, screen management and comprehensive security control.

Additional lock options are available for items such as USB port, Wi-Fi and Bluetooth connections, networks port access and remote controllers, even for multiple screens.



Take action before a problem happens

VXT detects dangerous situations in advance, such as a severe temperature increase or weak network signal.

By sending a warning email and SMS to the user, it proactively addresses the issue before it affects any displays while also ensuring stable content play.

Monthly Energy Report

Analyze the monthly electricity consumption of your screens, including a comparison to the previous month.

Brightness Control

Automatic On/Off Timer

Holiday Management



Other Services



OEM (HARDWARE)

- Professional Display, Laptop, Desktop, Commercial TV, and Server



MANAGED IT SERVICES

- Onsite Tech Support
- Tech Installation and Upgrades



TECH PRODUCTS & SERVICES

- Order Fulfillment System
- Custom Development Services
- Development Services



BUSINESS PROCESS OUTSOURCING

- Inbound Customer Services (Voice and Chat)
- Back Office Support Services
- Remote Tech Support Services (T1 & T2)



SOFTWARE

- LiveChat
- Freshworks



**Hewlett Packard
Enterprise**

Panasonic


LiveChat


McDelivery

SAMSUNG

 **freshworks**



Why Choose us?



Techpryme as your partner for Samsung Display Solutions

As a Direct Partner of Samsung Philippines, we offer competitive pricing on our lineup of Display Solutions. From delivery and installation to ongoing customer support, we ensure you receive top-notch service without compromising on affordability.



Cutting-Edge Technology

We take pride in being selected as a partner for Samsung, a brand synonymous with cutting-edge technology and innovation in display solutions. Renowned for reliability and high-quality products, Samsung's trust is a testament to our commitment to excellence.



Customization and Integration

We recognize that every business is unique, which is why we offer customizable display solutions that seamlessly integrate with your existing infrastructure and branding.



Comprehensive Support and Service

Our commitment to your satisfaction extends beyond the initial purchase. We provide comprehensive support and service throughout the entire lifecycle of your display solution. From installation and configuration to ongoing maintenance and technical support, we are here to ensure your displays operate seamlessly.



Cost-Effective Solutions

We understand the importance of maximizing your return on investment. That's why we offer cost-effective display solutions that deliver exceptional value. Whether you're a small business or a large enterprise, we work within your budget to provide the best possible solution for your needs.